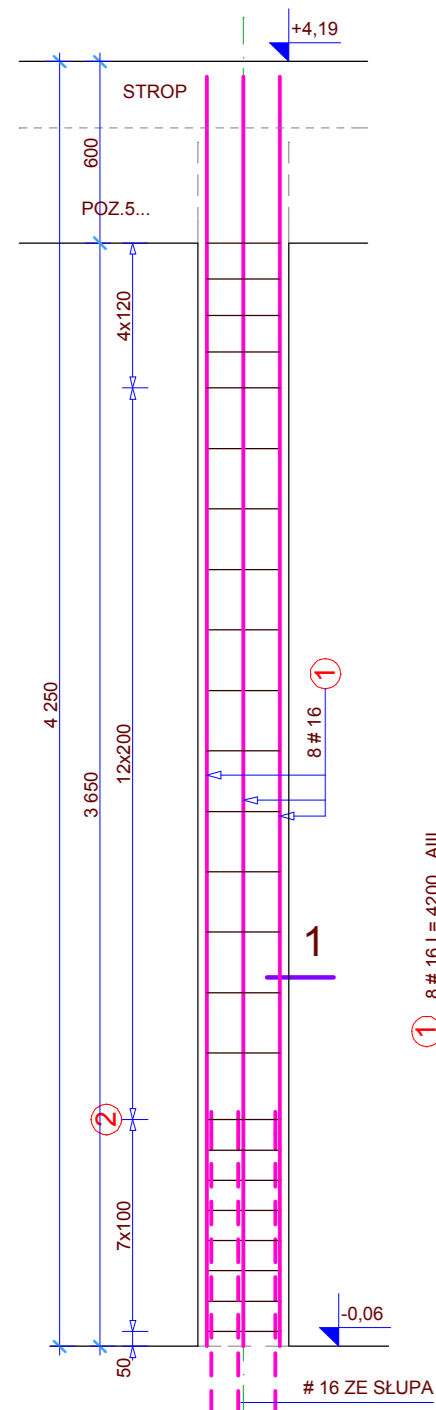
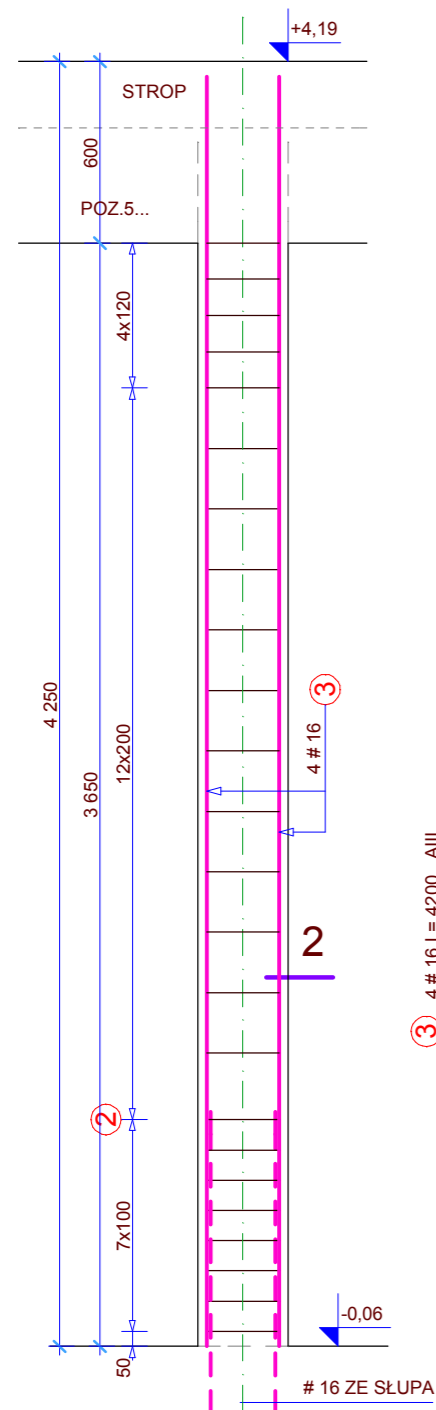


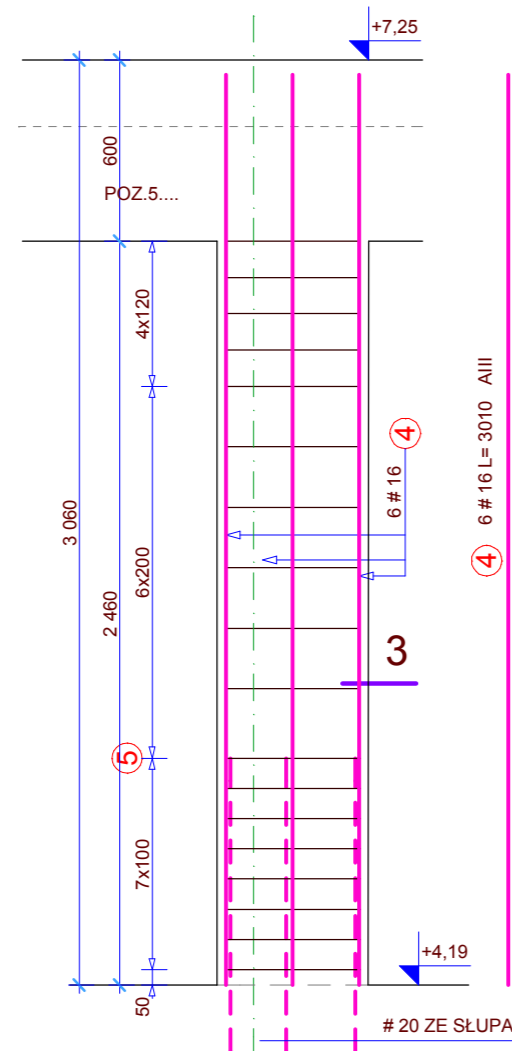
POZ.7.24 SŁUP



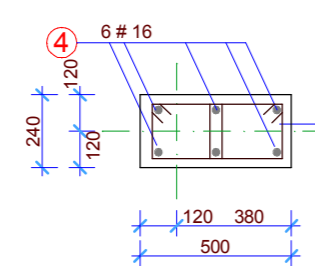
POZ.7.25 SŁUP



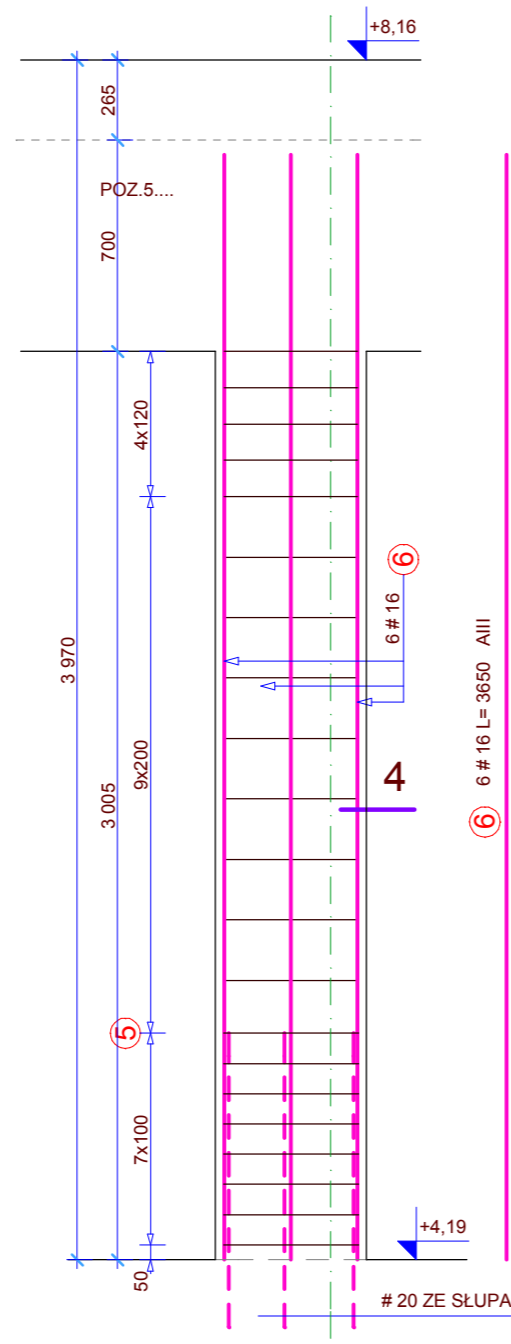
POZ.7.26 SŁUP
POZ.7.27; POZ.7.28



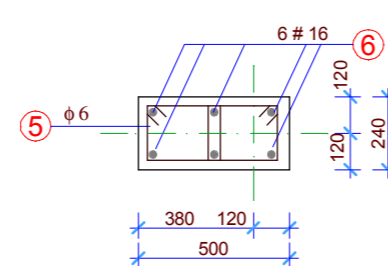
3-3



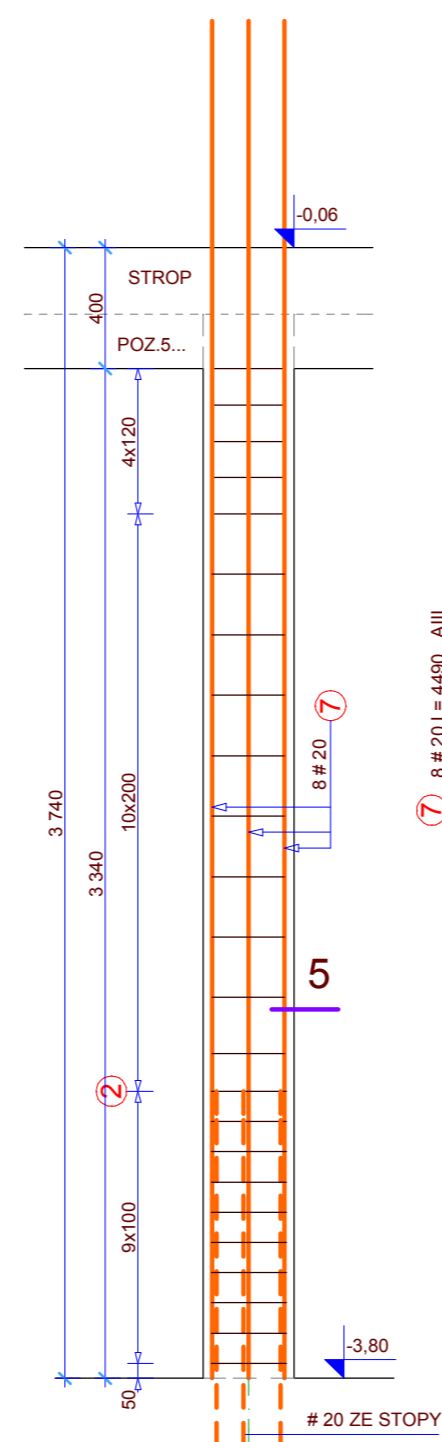
POZ.7.29 SŁUP
POZ.7.30



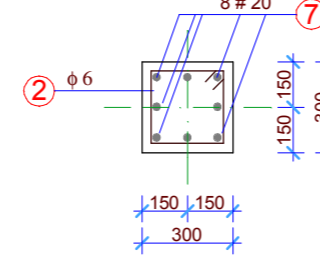
4-4



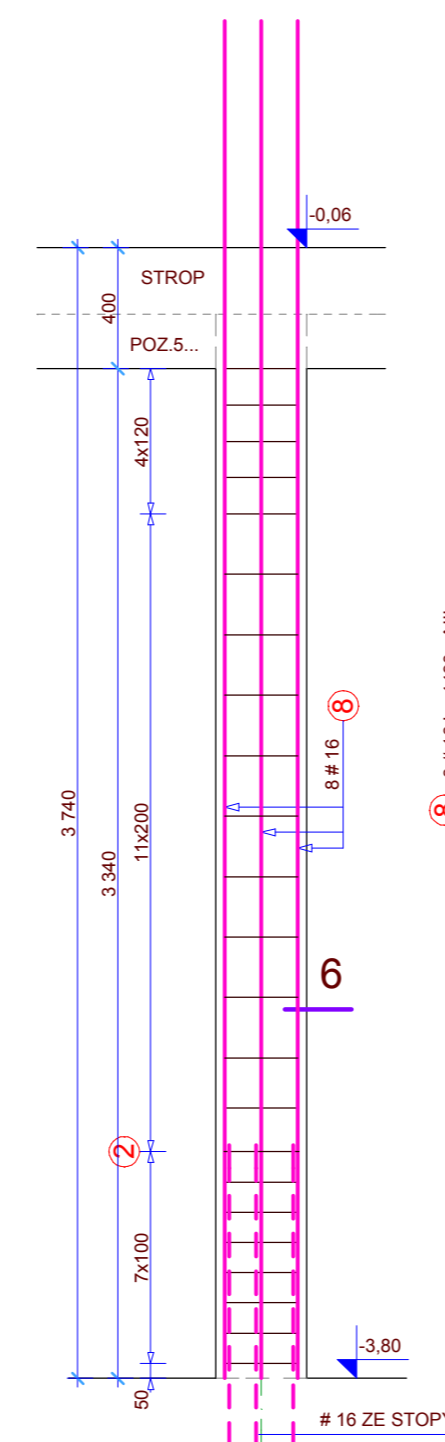
POZ.7.24.1 SŁUP



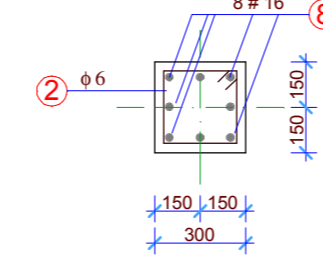
5-5



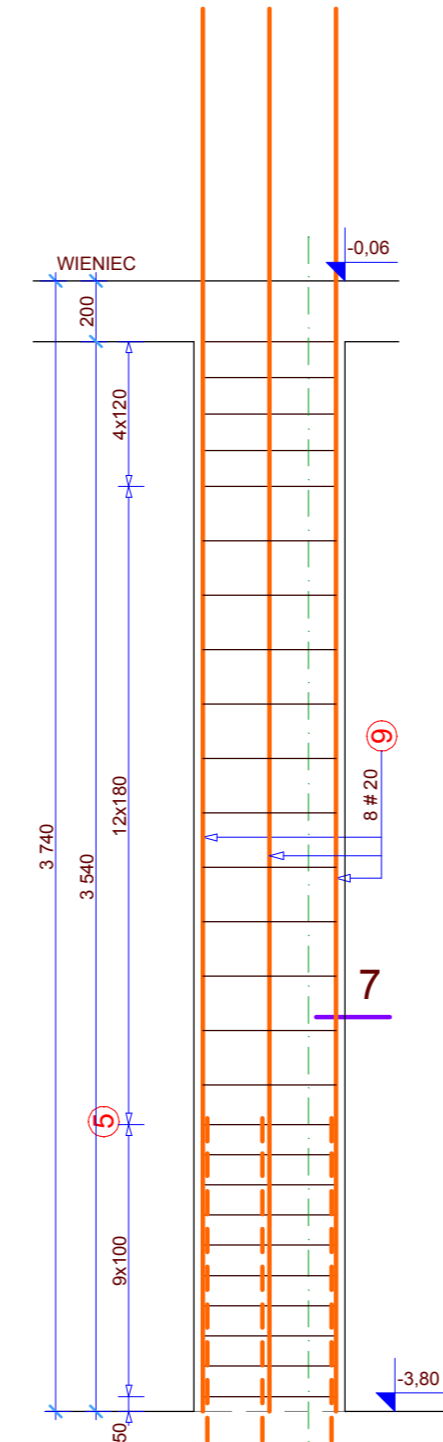
POZ.7.25.1 SŁUP



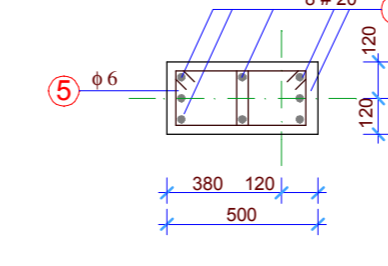
6-6



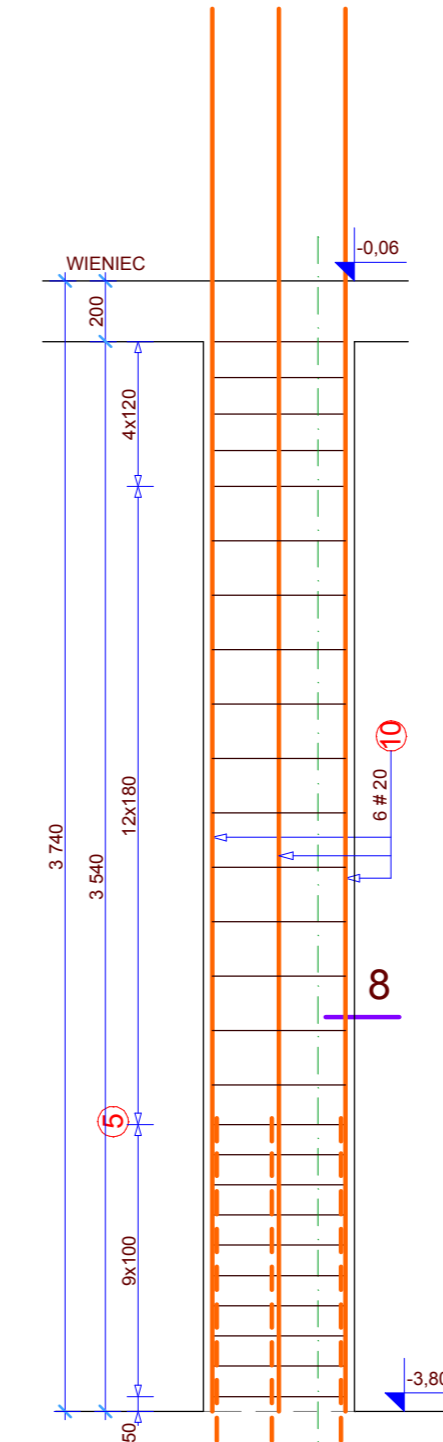
POZ.7.21.1 SŁUP



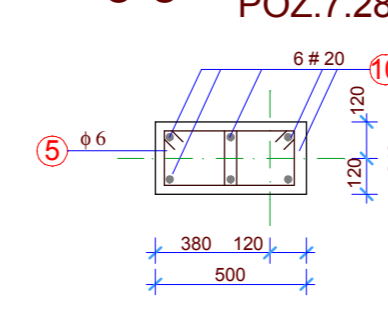
7-7



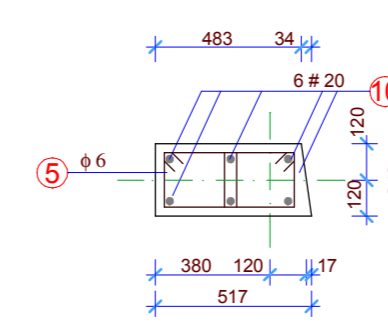
POZ.7.26.2 SŁUP
POZ.7.28.2 ; POZ.7.30.2
POZ.7.31.1



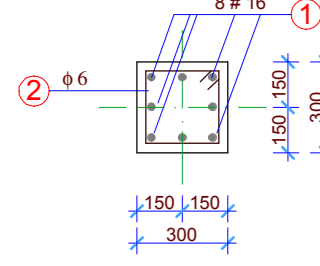
8-8



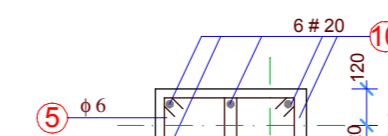
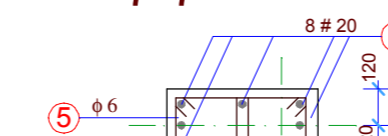
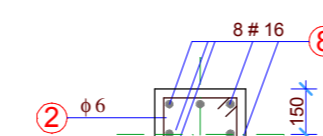
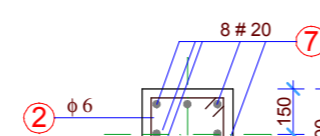
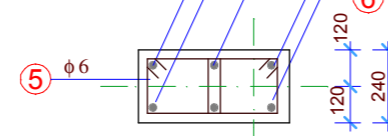
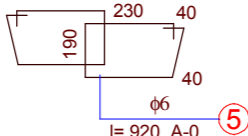
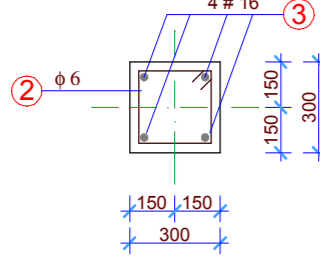
8-8 POZ.7.31.1
POZ.7.26.2



1-1



2-2



ELEMENT	ILOŚĆ ELEM. szt.	NR	φ	DŁUGOŚĆ PRETA m.	ILOŚĆ W 1 ELEM. szt.	A-O					
						DŁUGOŚĆ ŁĄCZNA ZBROJENIA					
						φ6	φ8	# 6	# 12	# 16	# 20
POZ.7.24	1	1	# 16	4,20	8						33,6
		2	φ6	1,04	24	25,0					
POZ.7.25	2	3	# 16	4,20	4						33,6
		2	φ6	1,04	24	49,9					
POZ.7.26	3	4	# 16	3,10	6						55,8
7.27; 7.28		2	φ6	0,92	36	99,4					
POZ.7.29	2	6	# 16	3,65	6						43,8
7.30		5	φ6	0,92	42	77,3					
POZ.7.24.1	1	7	# 20	4,49	8						35,9
		2	φ6	1,04	24	25,0					
POZ.7.25.1	2	8	# 16	4,49	8						71,8
		2	φ6	1,04	23	47,8					
POZ.7.21.1	1	9	# 20	4,64	8						37,1
		5	φ6	0,92	52	47,8					
POZ.7.26.2; 7.28.2	4	9	# 20	4,64	6						111,4
7.30.2; 7.31.1		5	φ6	0,92	52	191,4					
RAZEM mb						563,5		0,0	0,0	238,6	184,4
kg/m.						0,222	0,395	0,222	0,888	1,58	2,47
RAZEM kg						125,1		0,0	0,0	377,1	455,5
RAZEM kg						125,1				832,5	

UWAGA: PRZED ZAKUPEM, PRZYCIĘCIEM ELEMENTÓW WSZYSTKIE WYKAZY NALEŻY SPRAWDZIĆ

BETON B-25
STAL ZBROJENIOWA
A-III (34GS) #, A-O (Stos)

BETON SŁUPÓW PIWNIC SZCZELNY Z DOTĄTKIEM HYDROBETU

TEMAT: PROJEKT WYKONAWCZY KONSTRUKCJI BUDYNKU CENTRUM AKWAKULTURY I INŻYNIERII EKOLOGICZNEJ UW-M OLSZTYN UL. WARSZAWSKA DZ. BUD. 75 OBR.110		PRACOWNIA PROJEKTOWA mgr inż. Zbigniew Dąbrowski 10-681 Olsztyn, ul. Wachowskiego 1/3 ☎ (0-89) 541-17-07	
RYSunek: POZ.7.0 SŁUPY, RDZENIE		data:	08.2008
opracował: mgr inż. Z. Dąbrowski upr. bud. 62/86/OI		skala:	1:25
sprawdził: mgr inż. Z. Wojtal upr. bud. 62/86/OI		RYS. 24	